

Research Activities at Ostfalia University of Applied Sciences

Prof. Dr.-Ing. Gert Bikker

Vice President for Research, Development and Technology Transfer

Location



Ostfalia in Numbers

4 Locations

12 Faculties

11.648
Students
(WS 21/22)

29 Institutes
1 legally
independent
entity



~ 90 Degree
programmes

978 Employees:
234 Professors
744 Colleagues
(Dec 2020)

~107,5 Mio.
Euro total budget in 2021

Locations and their Faculties

Salzgitter

- Transport-Sports-Tourism-Media



Suderburg

- Civil and Environmental Engineering
- Trade and Social Work

Wolfsburg

- Automotive Engineering
- Public Health Services
- Business



Wolfenbüttel

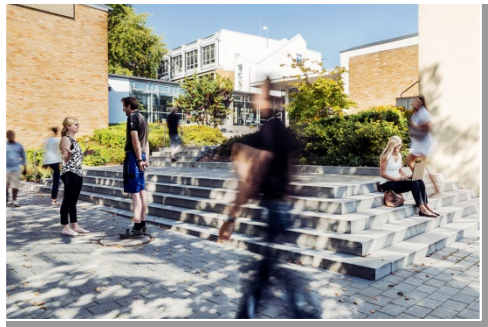
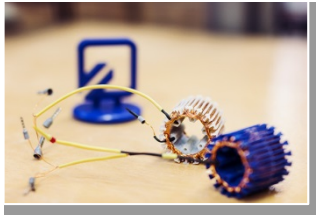
- Electrical Engineering
- Computer Science/IT
- Mechanical Engineering
- Law (BELS)
- Social Work
- Supply Engineering

Characteristic Features

- Courses with integrated vocational training
- Numerous postgraduate courses
- Numerous international cooperations
- Close relations to industry and business
- High rate of third-party funding
- Interdisciplinarity



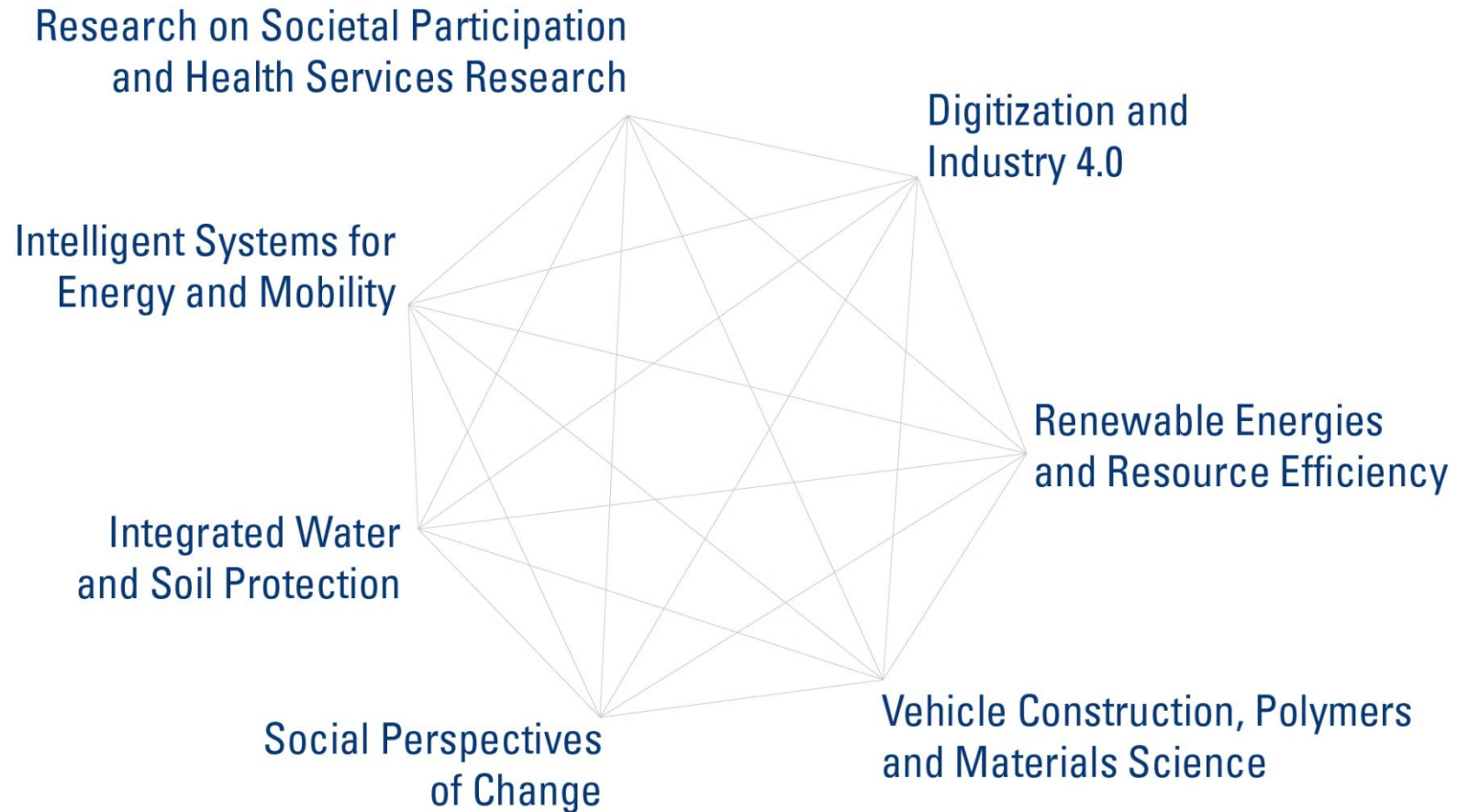
Research at Ostfalia



.....is characterised by:

- Applied research activities
- Cross-discipline research approaches with focuses in seven research areas and five research centres
- Social relevance
- Open-ended, independent and responsible implementation
- Dependable partnership
- Strong regional anchoring
- Increased alignment with the international research environment

Research Areas at Ostfalia



Research Centres at Ostfalia

CEMO

Centre for Energy and Mobility

OLIF

Ostfalia Learning and Innovation Factory

ZaF

Centre for Additive Manufacturing

ZEGI

Centre for the Innovation of Society

ZWIRN

Centre for Scientific, Interdisciplinary Risk Management and Sustainability

Cooperation between Businesses and Ostfalia – Advantages for the University

- + Intensive dialogue with partners in the field on current topics and issues regarding applied research and development, knowledge gains
- + Third-party funded projects with cooperation partners (research and development contracts and research applications), use of results in practice
- + Extension of the research and partner network
- + Ensuring practical aspect of training
 - by working on current problems experienced by companies
 - student insights into the desired professional field
 - study work in cooperation with companies
 - orientation option for students, with a real view of the professional world



Cooperation between Businesses and Ostfalia – Advantages for Partners

- + Transfer of knowledge, technology and ideas through
 - cooperation with researchers at Ostfalia
 - a share in the Ostfalia knowledge pool
 - participation in research networks
 - awarding of contracts to institutes and associated institutes of the University
 - contact with students and current developments

- + optimally trained personnel thanks to having
 - young, flexible employees with short study durations
 - high practical relevance in education, through integrated internship semester and teachers with professional experience in industry

- + application-oriented, job-related training, even for companies that do not have their own training system



Knowledge and Technology Transfer Offers



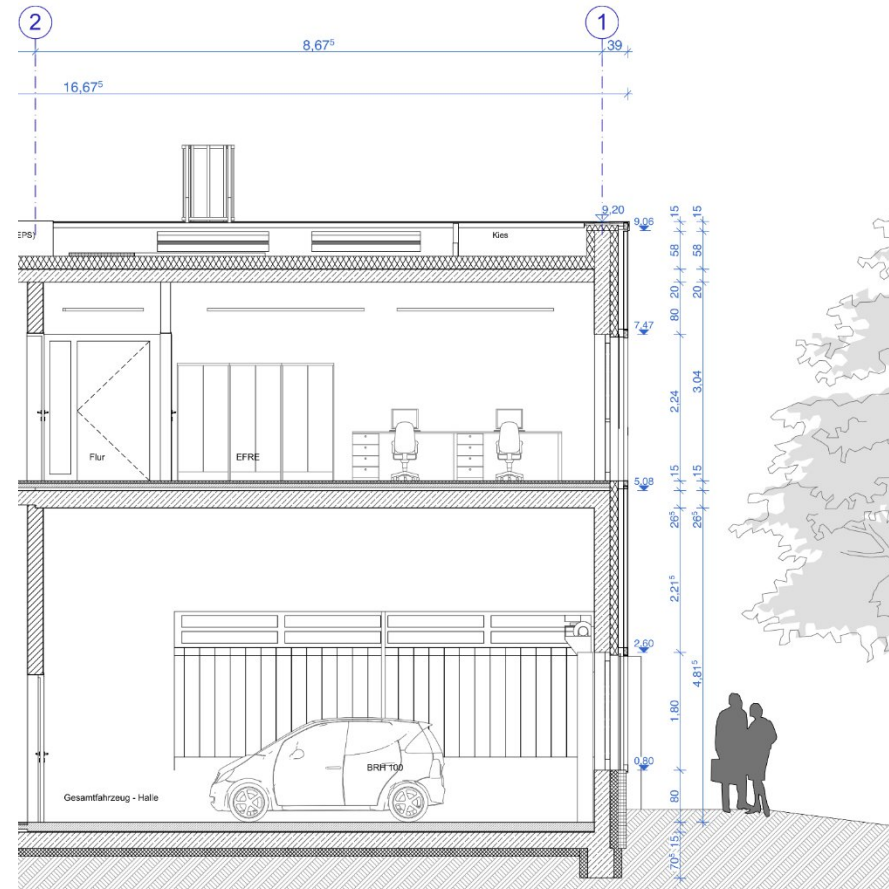
- Providing support for **collaborative ventures** in the context of contract and grant-funded research
- Providing information about the **research priorities and projects**
- **Arranging contacts** to Ostfalia's professors
- Providing advice on **funding possibilities**
- Providing advice on **invention disclosures, patents and property rights**
- Organizing **events** with a view to exchanging ideas and knowledge



Open Mobility Lab (OML) AI as an application option for the digital transformation of industrial processes

Open Mobility Lab

- Centre for Energy and Mobility (CEMO)
- Faculty of Elektrotechnology
- Faculty of Computer Science
- Faculty of Mechanical Engineering
- Knowledge and Technology Transfer





Your Contact Persons

Prof. Dr.-Ing. Gert Bikker

*Vice President for Research,
Development and Technology Transfer*
g.bikker@ostfalia.de

Kai Hillebrecht, Dipl.-Biol.

*Vice Head of Knowledge and Technology
Transfer*
kai.hillebrecht@ostfalia.de

Julia Mehring, M.A.

Transfer Officer
jul.mehring@ostfalia.de

Dr. Mei Liu

Project Staff weRinteR
m.liu@ostfalia.de



UNLOCK YOUR POTENTIAL – OUR KNOWLEDGE IS THE KEY



HAW.International: InterAct! – International Activities



- Goal: Improving the international presence and the international exchange of Ostfalia
- Duration: 01/2022 until 12/2023
- Implementing measures in the areas of
 - Strategy development
 - Internationalisation at home
 - Mobility
 - Network development and cooperation
 - Financing
 - Digitalization and (science) communication



Deutscher Akademischer Austauschdienst
German Academic Exchange Service