

## FACT SHEET CLIMBING

Effects of Structural and Social Change on Municipalities in Germany and the Baltic States

### WHY?

Major social/structural challenges of the EU are changing social life and economy:



CLIMATE CHANGE



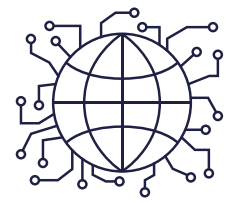
SUSTAINABILITY



MIGRATION



DECLINING BIRTH RATE



DIGITALISATION

NEED FOR INTERDISCIPLINARY SOLUTIONS TO ENSURE  
A SUSTAINABLE-REGIONAL DEVELOPMENT

### WHAT?

ClimBinG brings together experts from different disciplines of applied research and training with the regional economy and society as well as the public sector to:

- investigate the effects of social and structural change on municipalities in Germany and the Baltic States in a transfer-oriented and interdisciplinary way
- identify good and best practices enhancing the competitiveness and attractiveness of science, economy and communities in the Baltic and German regions and municipalities participating in the project
- establish a transnational network of science and innovation in order to develop an application strategy in suitable EU funding programmes solving urgent municipal challenges
- build smart and interdisciplinary economic science partnerships for real impact in the EU regions and municipalities involved
- increase the impact of applied research and innovation and thus enhance the competitiveness and visibility of the participating scientific institutions within the European Research area
- promote the internationalisation of the participating higher education institutions e.g. via joint interdisciplinary and transnational training



**HSH**  
Harz University of Applied Sciences  
(Germany)



**MRU**  
Mykolas Romeris University  
(Lithuania)



**RTA**  
Rezekne Academy of Technologies  
(Latvia)



**TTU**  
Tallinn University of Technology  
(Estonia)

### HOW?

